

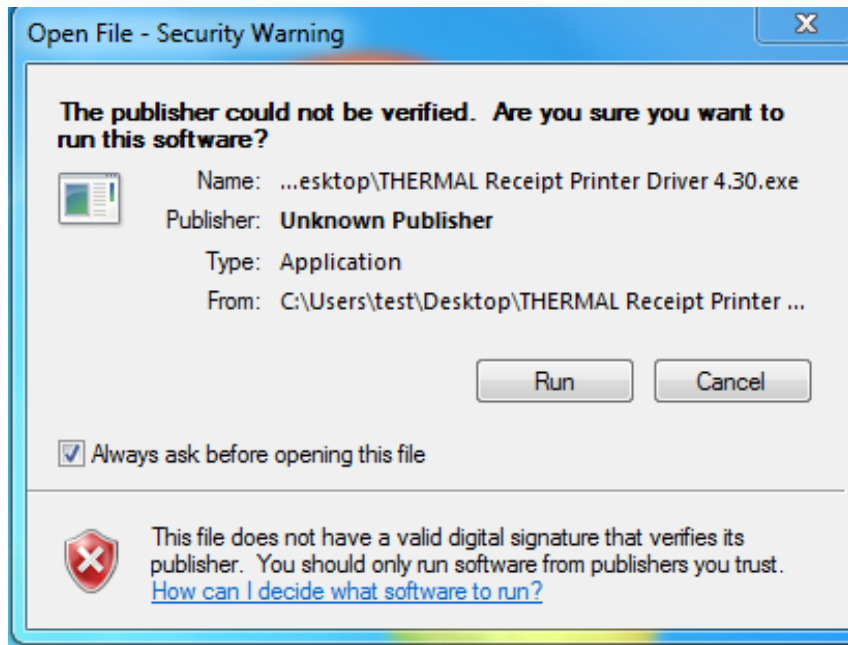
# Posligné

# ODP-1000

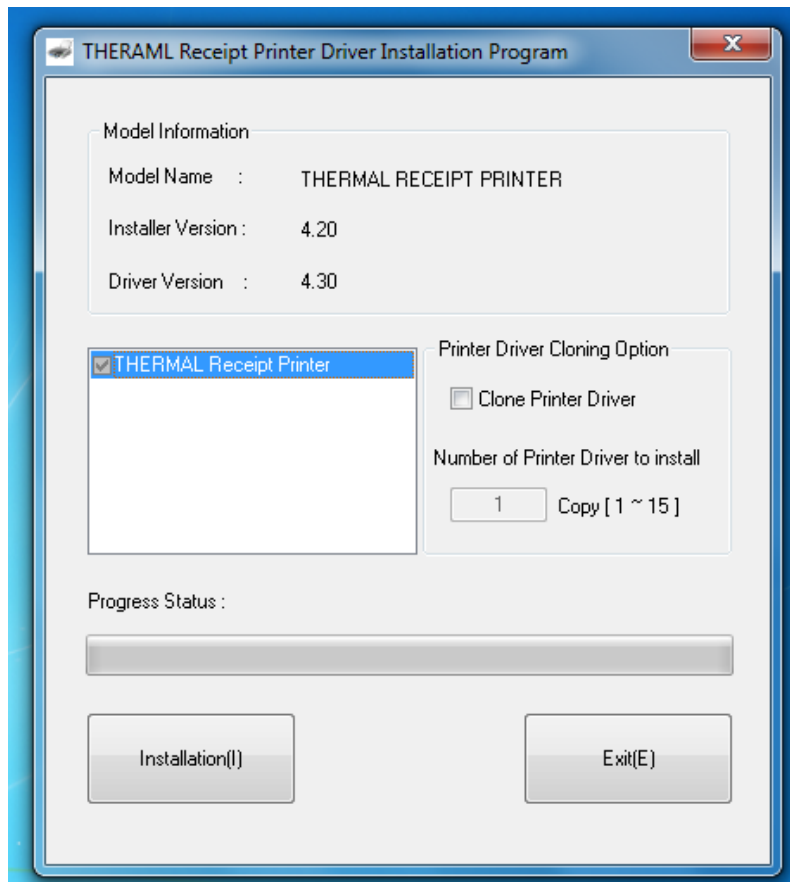
## Thermal Receipt Printer



After downloading the driver, a security window will appear. Click 'run'.



After a few seconds of preparing an installer window will appear as shown.

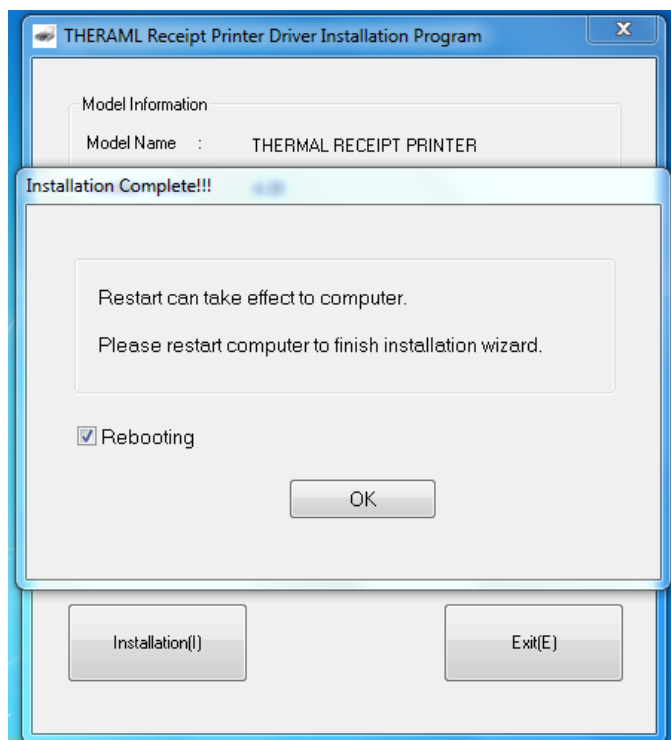


Tick the 'THERMAL Receipt Printer' and then click install.

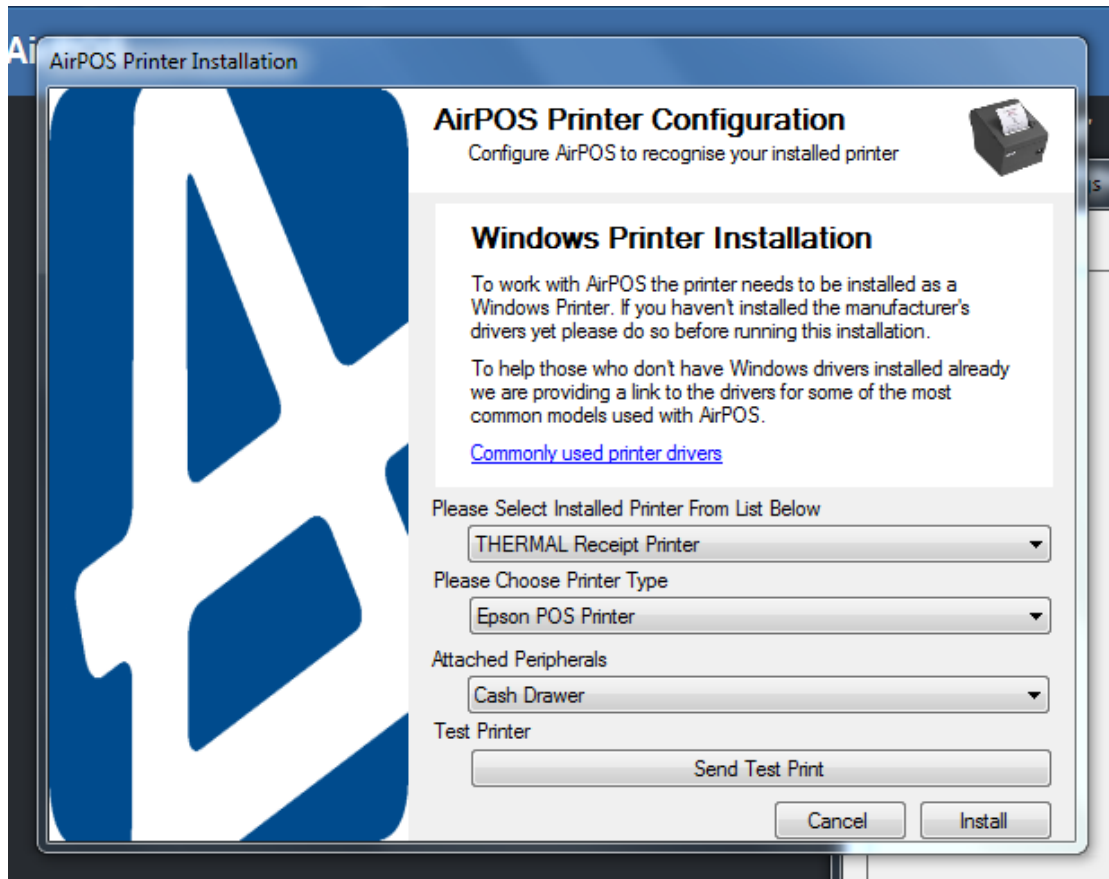
Once finished, select your operating system in the prompt that follows;



Click 'OK'. Once clicked, your receipt printer should now be installed and you should receive the following prompt;



To configure this printer to work with AirPOS, you must then open the AirPOS ePOS application, navigate your way along to the settings page and click the 'peripherals' button from the left hand side navigation. Then select 'Configure A Receipt Printer' and the following setup wizard should appear;



Select the name of the printer from the dropdown of installed printers, then choose the printer type as 'Epson POS Printer' and if you have a cash drawer attached to the receipt printer via an RJ-11 cable, ensure you select 'Cash Drawer' from the Attached Peripherals dropdown list. You should then send a test print. If a receipt is printed, click install.